

# TOURQUING AND TENSIONING TOOLS



+91-9004603489  
+91-8355875670



Info@torquingtools.com

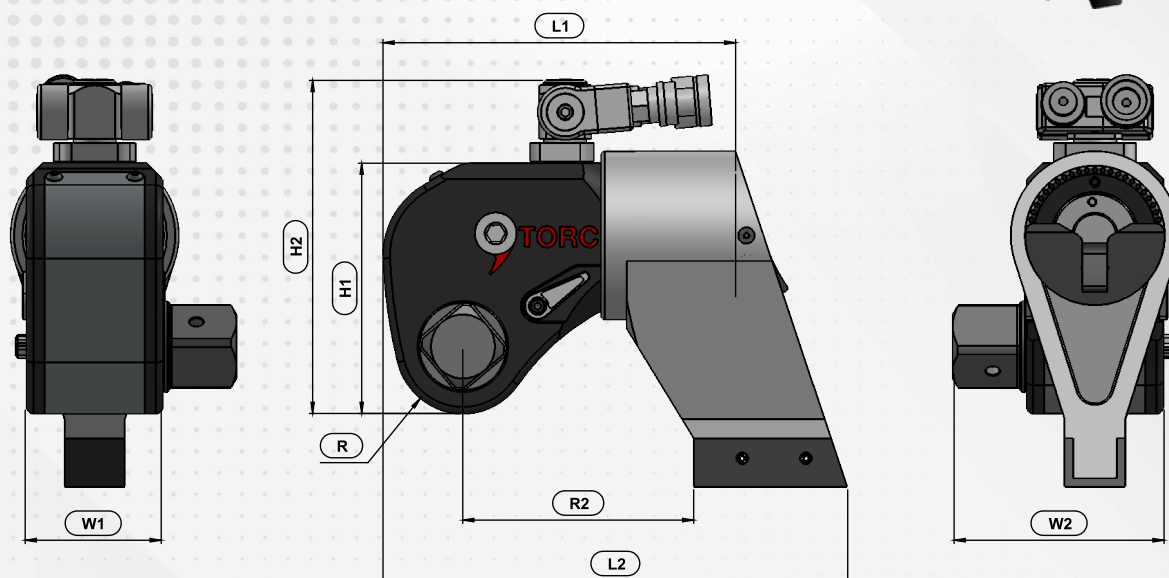


Shop No.3, Dwarkamai Complex,  
Tilak College Road, Near Gharda Circle,  
Rohidas Nagar, Azde, Dombivli (E).



www.torquingtools.com

# SQUARE DRIVE TORQUE WRENCH



## FEATURES

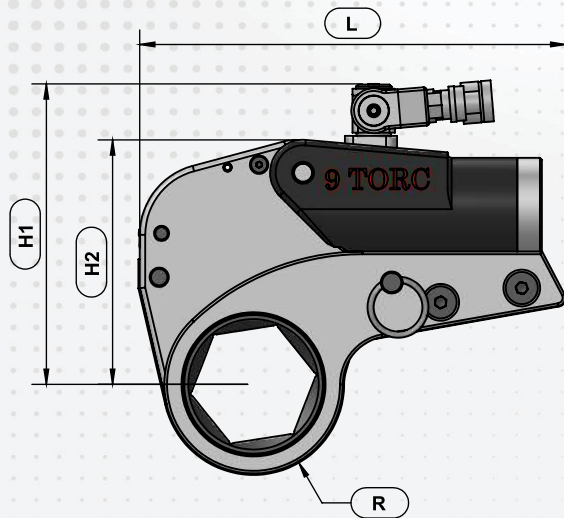
- 1 The material used are Aluminum-Titanium alloy & High strength alloy steel for higher strength,intensity & durability.
- 2 Precise design gives accurate (Accuracy +-3%) performance.
- 3 Anti-backlash mechanism for overcoming the back turn of the wrench.
- 4 Lock-up release lever that allows you to release pressure after torquing for easy removal.
- 5 Optimized design that leads to compact & light weight tool.
- 6 360° x 180° Swivel mechanism.
- 7 Used specified coating for cylinder housing ensures better wear resistance of cylinder bore.
- 8 Higher hardness of alloy steel reduces wear & tear between Ratchet and Pawl mechanism hence increases total life cycle of the tool.
- 9 Leak proof quick connecting coupler.
- 10 Piston seals used are with newly developed material for extended life cycle.

MODEL NO.	UNITS	9TSTW-2	9TSTW-5	9TSTW-8	9TSTW-10	9TSTW-15	9TSTW-20	9TSTW-25	9TSTW-35	9TSTW-50
Square Dr.	Inch	3/4"	1"	1.1/2"	1.1/2"	1.1/2"	2.1/2"	2.1/2"	2.1/2"	2.1/2"
Torque Range	N-m	164 - 1760	433 - 4332	742 - 7420	1015 - 10430	1509 - 15090	1940 - 19409	2504 - 26447	3309 - 34626	4741 - 47414
	Ft-Lbs	121 - 1298	319 - 3195	547 - 5473	749 - 7693	1113 - 11130	1431 - 14315	1847 - 19506	2440 - 25539	3497 - 34971
Body Length (L1)	mm	130	170	202	228	237	273	287	323	351
Overall Length (L2)	mm	182	249	286	326	336	391	433	464	494
Tool Width (W1)	mm	52	70	81	90	100	110	120	138	153
Overall Width (W2)	mm	77	98	125	134	144	164	187	206	217
Tool Height (H1)	mm	96	127	150	172	181	206	221	258	279
Overall Height (H2)	mm	133	165	184	207	216	241	256	293	315
Radius (R)	mm	26	35	40	47	51	57	60	71	77
R2	mm	102	140	160	184	192	223	248	256	271
Weight	kg	2	5	7	10.6	12.9	20	25	33.8	43

☎ +91-9004603489 / 8355875670    ✉ Info@torquingtools.com,

📍 Shop No.3, Dwarkamai Complex, Tilak College Road, Near Gharda Circle, Rohidas Nagar, Azde, Dombivli East.

# HEX DRIVE TORQUE WRENCH



## FEATURES

- 1 The material used are Aluminium-Titanium alloy & High strength alloy steel for higher strength, intensity & durability.
- 2 Deliver accurate (Accuracy  $\pm 3\%$ ) performance in limited space.
- 3 Anti-backlash mechanism for overcoming the back turn of the wrench.
- 4 Optimized design that leads to compact & light weight tool.
- 5  $360^\circ \times 180^\circ$  Swivel mechanism.
- 6 Wide range of hex sizes available for all applications.
- 7 Used specified coating for aluminum power head which ensures better wear resistance of cylinder bore.
- 8 Higher hardness of alloy steel reduces wear & tear between Ratchet and Pawl mechanism hence increases total life cycle of the tool.
- 9 Leak proof quick connecting coupler.
- 10 Piston seals used are with newly developed material for extended life cycle.

MODEL NO.	UNITS	9HTW-2	9HTW-6	9HTW-10	9HTW-20	9HTW-25	9HTW-45
Torque Range	N-m	230 - 2410	580 - 6470	1090 - 11770	1850 - 18520	2307 - 23072	4180 - 44600
	Ft-Lbs	172 - 1935	400 - 4800	777 - 8726	1370 - 13722	1709 - 17090	3038 - 33038
Links (A/F)	mm	19 - 60	34 - 80	41 - 105	50 - 117	95 - 135	110 - 175
	Inch	3/4" - 2.3/8"	1.5/16" - 3.1/8"	1.5/8" - 4.1/8"	2 - 4.1/2"	3.3/4" - 4.1/2"	4.1/4" - 6.7/8"
Overall Length	mm	197	246	301	361	400	441
H1	mm	129	187	216	240	246	315
H2	mm	105	146	178	204	224	285
Width of link (W1)	mm	32	42	53	64	70	85
Width of cylinder (W2)	mm	51	66	83	99	110	131
Nose Radius (R)	mm	27 - 46	36 - 61	46 - 78	60 - 87	99	78 - 128
Power Head Wt.	kg	1	2	3.3	5.5	6.5	11.4
Link Wt.	kg	1.7	4.6	8.4	11.6	16.5	30

+91-9004603489 / 8355875670    Info@torquingtools.com,

Shop No.3, Dwarkamai Complex, Tilak College Road, Near Gharda Circle, Rohidas Nagar, Azde, Dombivli East.



## PUMPS USED WITH HYDRAULIC WRENCHES



### 9TEP-700 and 9TPP-700

Heavy Duty High Flow  
High Speed Electrically  
and Pneumatically  
Operate Pump.



#### 9TEP-700 ELECTRIC

- Quadra - Port Multi-Port Manifold (Max. 4 Ports)
- Cool running continuous duty axial piston pump.
- Single phase induction motor.
- 115V and 230V available.
- Quiet operation (approx. 80 dBA @ 10,000 PSI).
- Rugged remote pendant to control motor and valve
- Easily adjustable pressure control knob.
- Auto-dump relieves oil pressure from hoses.
- Completely enclosed motor and electronics.
- 2 Gallon oil reservoir.
- Precise PSI/BAR pressure gauge.
- Quick-connect no-drip couplers with safety locking collar.
- Supplied with dual non-conductive high-pressure hose with couplers.
- Starts under full load.
- Runs on reduced voltage

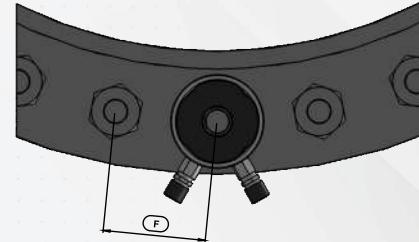
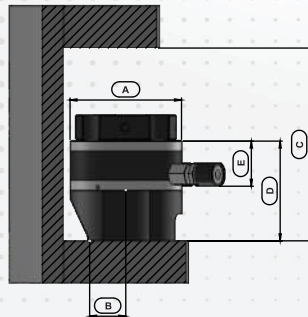
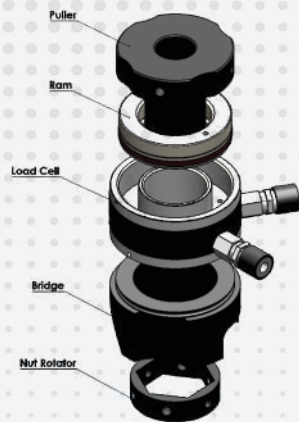
#### 9TPP-700 PNEUMATIC

- Quadra - Port Multi-Port Manifold (Max. 4 Ports)
- Cool running continuous duty axial piston pump.
- Powerful 1.5HP industrial duty air motor.
- Runs on 50 cfm / 80 PSI of air.
- Quiet operation (approx. 80 dBA @ 10,000 PSI).
- Rugged remote pendant to control motor and valve.
- Easily adjustable pressure control knob.
- Auto-dump relieves oil pressure from hoses.
- Filter-lubricator for long trouble-free operation.
- 2 Gallon oil reservoir.
- Precise PSI/BAR pressure gauge.
- Quick-connect no-drip couplers with safety locking collar.
- Supplied with dual non-conductive high-pressure hose with couplers.

+91-9004603489 / 8355875670    Info@torquingtools.com,

Shop No.3, Dwarkamai Complex, Tilak College Road, Near Gharda Circle,  
Rohidas Nagar, Azde, Dombivli East.

# TOP-SIDE BOLT TENSIONER



Model	Bolt size		Cylinder	Area	Dimension						Weight
					A	B	C	D	E	F	
	Metric	Inch			KN	cm²	mm	mm	mm	mm	
9TBT-01	M16	-	234.2	15.7	75	32.5	168	90	62	47-51	2
	M18	3/4"									
	M20	-									
	M22	7/8"									
	M24	1									
9TBT-03	M27	1-1/8"	498.2	33	102	47	187	106	60	65-71	4
	M30	-									
	M33	1-1/4"									
	M36	1-3/8"									
	M39	1-1/2"									
9TBT-05	M39	1-1/2"	896.8	59.7	133	61	208	120	60	86-93	6
	M42	1-5/8"									
	M45	1-3/4"									
	M48	1-7/8"									
9TBT-07	M52	2"	1245.5	83	163	73	231	135	62	106-114	10
	M56	2-1/4"									
	M60	-									
	M64	2-1/2"									
9TBT-09	M64	2-1/2"	1843.3	123	193	86.5	254	150	62	129-135	15
	M68	-									
	M72	2-3/4"									
	M76	3"									
9TBT-11	M76	3"	2640.5	176	233	110	286	180	73	155-167	24
	M80	-									
	M85	3-1/4"									
	M90	3-1/2"									
	M95	3-3/4"									
	M100	4"									
9TBT-13	M110	4-1/2"	4384.2	251	280	111-121	304-338	181-197	37-40	210-233	45
	M120	4-3/4"									
	M125	5"									
9TBT-15	M130	5-1/4"	5380.5	317	325	126-141	354-388	202-216	42-47	243-275	73
	M140	5-1/2"									
	M150	5-3/4"									

+91-9004603489 / 8355875670    Info@torquingtools.com,

Shop No.3, Dwarkamai Complex, Tilak College Road, Near Gharda Circle, Rohidas Nagar, Azde, Dombivli East.

# ELECTRIC TORQUE WRENCH



## L Series

### FEATURES

- 1 9TORC - Electric Torque Wrench.
- 2 Small volume, Light weight, Easy to control.
- 3 Adopt digital controller, accurate and reliable.

L Series										
MODEL	VOLTAGE	MAX	MAX	TORQUE RANGE	SPEED	WEIGHT	SQUARE DRIVE	ADAPTABLE BOLTS DIA		
		CURRENT	POWER		(min-1)	(MAIN BODY)		S-10T	A325	A490
TL-3B	230V 115V	6A	1300W	100-300N.m	24rpm	4.4KG	19*19mm	M12	1/2"	1/2"
		12A		(71-221ft.lbs)		(11.2lbs)	(3/4"*3/4")	M16	5/8"	
TL-5B	230V 115V	7A	1650W	200-500N.m	15.5rpm	4.5KG	19*19mm	M16	5/8"	5/8"
		14A		(148-369ft.lbs)		(9.92lbs)	(3/4"*3/4")	M20	3/4"	
TL-9B	230V 115V	7A	1650W	400-900N.m	9.5rpm	5.3KG	25.4*25.4mm	M20	3/4"	3/4"
		14A		(295-664ft.lbs)		(11.68lbs)	(1"*1")	M22	7/8"	7/8"
								M24	1"	
TL-7LP	230V 115V	8A	1800W	300-700N.m	15rpm	4.7KG	25.4*25.4mm	M20	3/4"	3/4"
		16A		(221-517ft.lbs)		(10.36lbs)	(1"*1")	M22	7/8"	
TL-12LP	230V 115V	12A	1800W	500-1200N.m	9rpm	5.5KG	25.4*25.4mm	M22	7/8"	7/8"
		24A		(369-886ft.lbs)		(12.16lbs)	(1"*1")	M24	1"	1"
TL-21LP	230V 115V	8A	1800W	900-2100N.m	6rpm	6.6KG	25.4*25.4mm	M27	1-1/8"	1-1/8"
		16A		(812-1845ft.lbs)		(14.55lbs)	(1"*1")	M30	1-1/4"	1-1/4"
TL-25G	230V 115V	12A	2800W	1000-2500Nm	5rpm	9.0kg	38mm*38mm	M27 M30	1-1/8" 1.1/4"	1.1/8" 1.1/4"
		24A					(1.1/2"*1.1/2")	M33	1.3/8"	
TL-35G	230V 115V	12A	2800W	1700-3500N.m	2.5rpm	12KG	38*38mm	M30	1-1/4"	1-1/4"
		24A		(1255-2583ft.lbs)		(35.27bs)	1/2"	M33	1-3/8"	1-3/8"
								M36	1-1/2"	
TL-60G	230V 115V	12A	2800W	2000-6000N.m	0.6rpm	18.5KG	38*38mm	M42	1-5/8"	1-5/8"
		24A		(2213-4428ft.lbs)		(40.79lbs)	(1-1/2"*1-1/2")	M45	1-3/4"	1-3/4"
								M48	2"	
TL-100G	230V 115V	12A	2800W	5000-1000Nm	0.3rpm	21KG	38*38mm	M48	2"	2"
		24A		(3688-7376ft.lbs)		(46.3lbs)	1/2"	M52	2-1/8"	2-1/8"
								M56	2-1/4"	

+91-9004603489 / 8355875670    Info@torquingtools.com,

Shop No.3, Dwarkamai Complex, Tilak College Road, Near Gharda Circle, Rohidas Nagar, Azde, Dombivli East.